

# WCUMunDM System Overview

---

## MUNICIPALITY DISASTER MANAGEMENT SYSTEM

OPS\PR\US\RCDFD\T\1

Rev: 1.000

04 October 2007



# SAAB

*Table of Contents*

---

1. System Overview ..... 1

2. Mapping and Terrain functionality ..... 1

3. Incident functionality..... 2

4. Communications..... 2

5. Reporting functionality..... 3

6. Administrator functions ..... 3

7. Interfaces ..... 3

8. Incident types..... 3

*List of Figures*

---

Figure 1: Map ..... 1

Figure 2: Incidents..... 2

*Copyright*

---

*All rights strictly reserved. Reproduction or issue to third parties in any form whatsoever is not permitted without written authority from Saab Systems South Africa. Company and product names are trademarks or registered trademarks of their respective companies*

## 1. System Overview

The WCUMunDM system is a system for capturing incidents and managing disaster situations from a central or distributed control room.

Depending on the scope of the operation and the required functionality, WCUMunDM can be operated by one or more operators. These operators can be co-located or the operations room functionality can be geographically distributed.

A prerequisite for the operation of WCUMunDM is a suitable digital communications infrastructure.

## 2. Mapping and Terrain functionality

The WCUMunDM system allows the loading of relevant mapping and terrain data. Standard maps can be combined with user data (such as water reticulation, electricity reticulation, drainage, etc.). As many viewing overlays as required can be loaded.

The operator can define overlays to annotate and place information points. The operator can pan and zoom the terrain view.

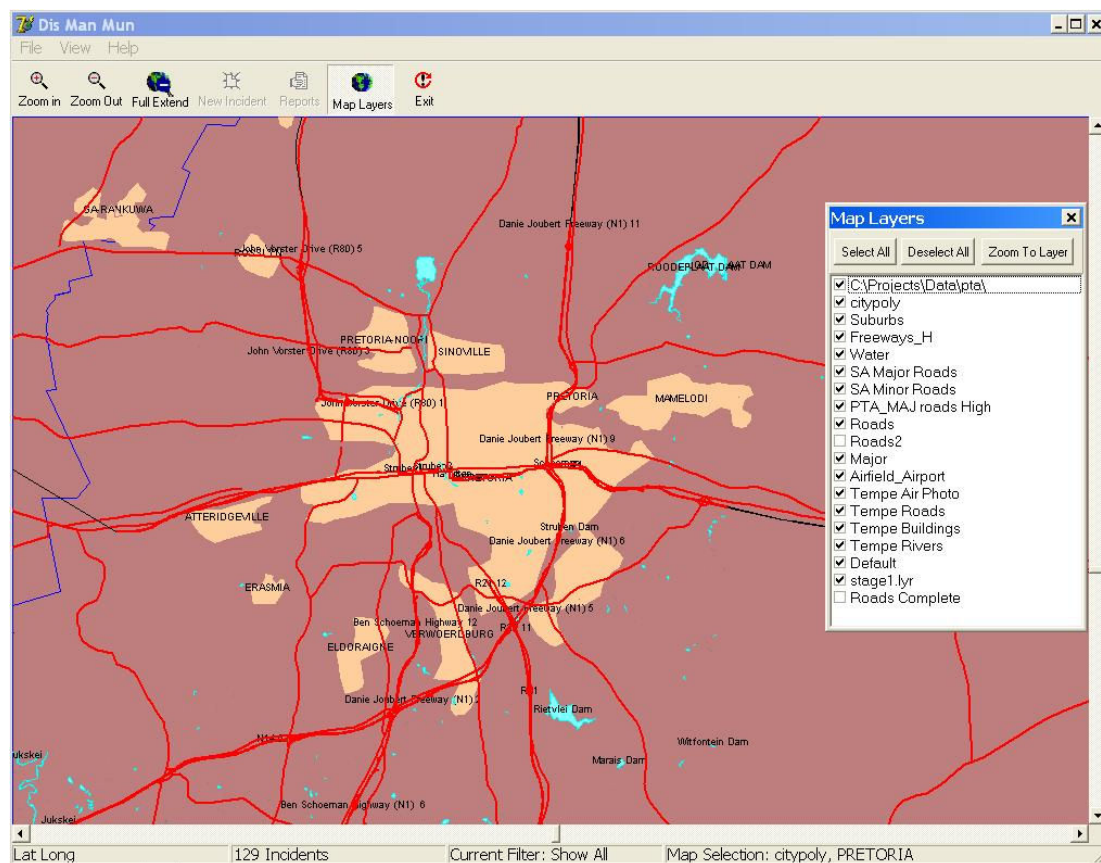


Figure 1: Map

### 3. Incident functionality

The WCUMunDM system allows the operator to capture incidents (see list below) and locate these on the map. Relevant information regarding the specific incident can be captured and saved to the database.

The operator can capture all incidents on one overlay or have specific overlays for specific incidents.

When the required data is available, the operator will be presented with the street address of a person reporting an incident (provided the CLI and the contact name and address in the customer supplied database is available.) The system will then save the operator / agent name and contact details for this incident. The map will automatically centre on the relevant address, allowing the operator to place an incident icon and capture the information as above.

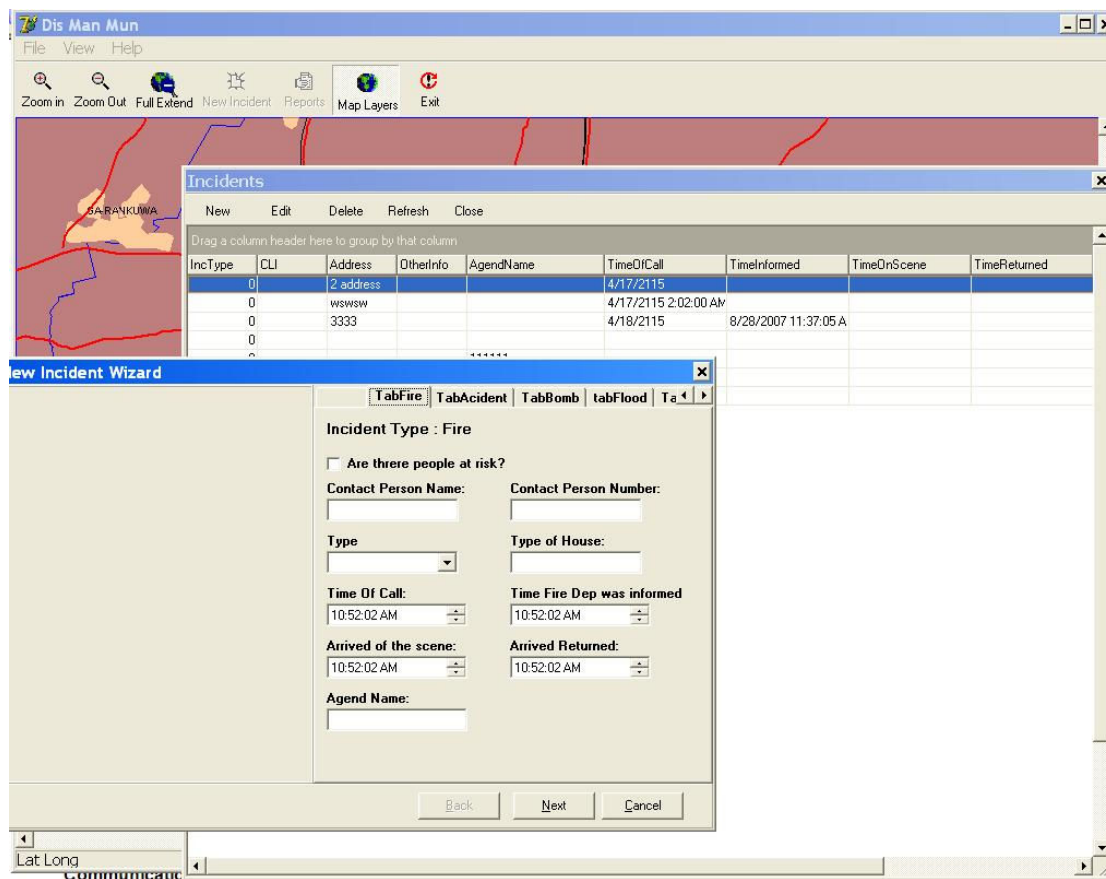


Figure 2: Incidents

### 4. Communications

In order for the WCUMunDM system to operate in a multi-operator environment, a suitable digital communications system is required. The WCUMunDM system can be utilised on a LAN in a control room with multiple operator stations. The system will automatically exchange relevant information between operator stations.

The WCUMunDM system can also be utilised in a geographically distributed context. Provided a suitable digital communications system is available, the same information exchange will occur.

## 5. Reporting functionality

As all information and incident data are stored to a database, the user can generate reports. These reports can be customised to suit specific user requirements.

Standard reports and statistical information presentations available include:

- Incident detail report.
- Incident summary report per time period.
- Fires per type per time period.
- Number of accidents per type per road per time period.

## 6. Administrator functions

Standard administrator functions are available. These include:

- An operator will be able to sign on to the system with a unique user ID / password.
- Database backup and restore functions.
- User ID / password maintenance functions.

## 7. Interfaces

External interfaces include the CLI data received from a CTI or equivalent system.

Internal interfaces comprise those to the Incident data base.

## 8. Incident types

- Fire
- Accident
- Bomb scare
- Flood
- Parties Involved
- Road Maintenance
- Police / criminal incident